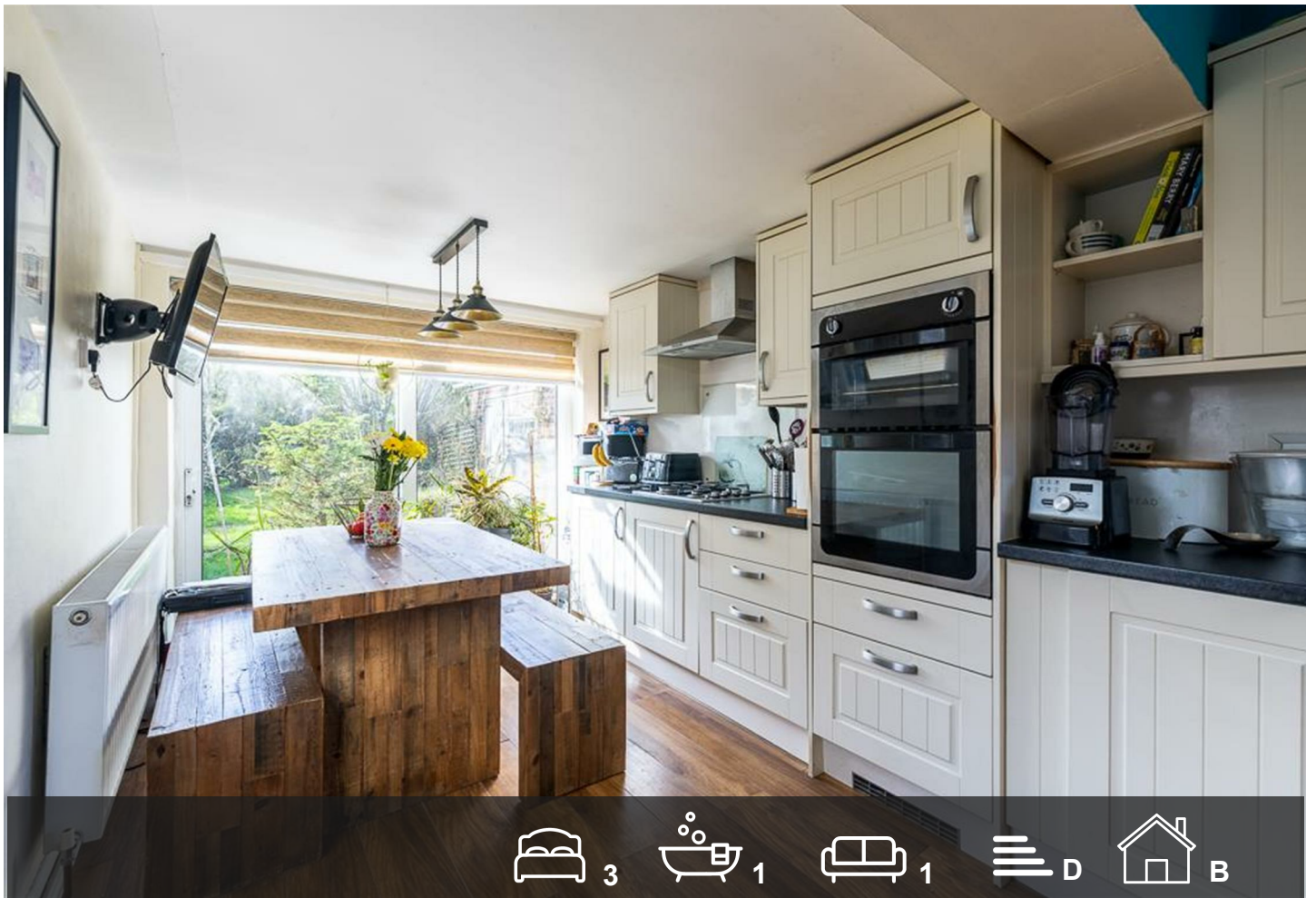


BRUCE MATHER

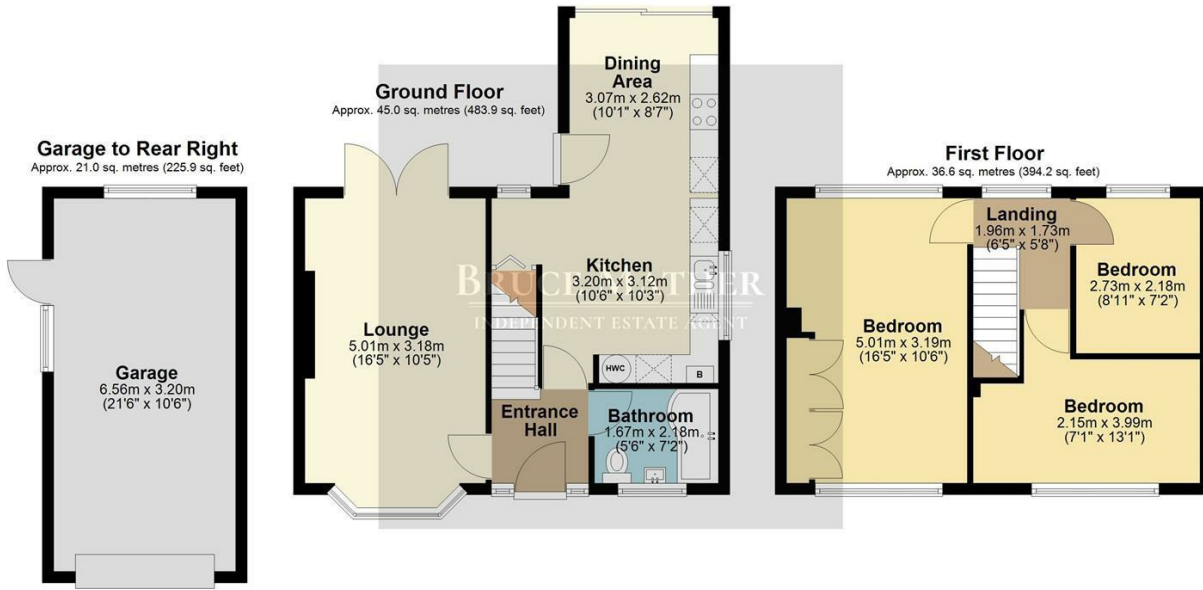
INDEPENDENT ESTATE AGENT



111 Eastwood Road, Boston, PE21 0PW Offers In The Region Of £200,000

A charming three bedroom semi-detached home with a wonderful kitchen/diner, long garden, located in a popular location at the edge of town. The accommodation comprises of three bedrooms downstairs is a modern bathroom, a lounge off the entrance hall and a great kitchen diner overlooking the garden. To the front there is parking for several vehicles, a garage and to the rear a long garden with bags of potential. Located at the edge of Boston with shops, schools and amenities all near by. This property has a very homely feel in a good location, please call Bruce Mather Estate Agent on 01205 365032 to arrange a viewing soon.

Floor Plan

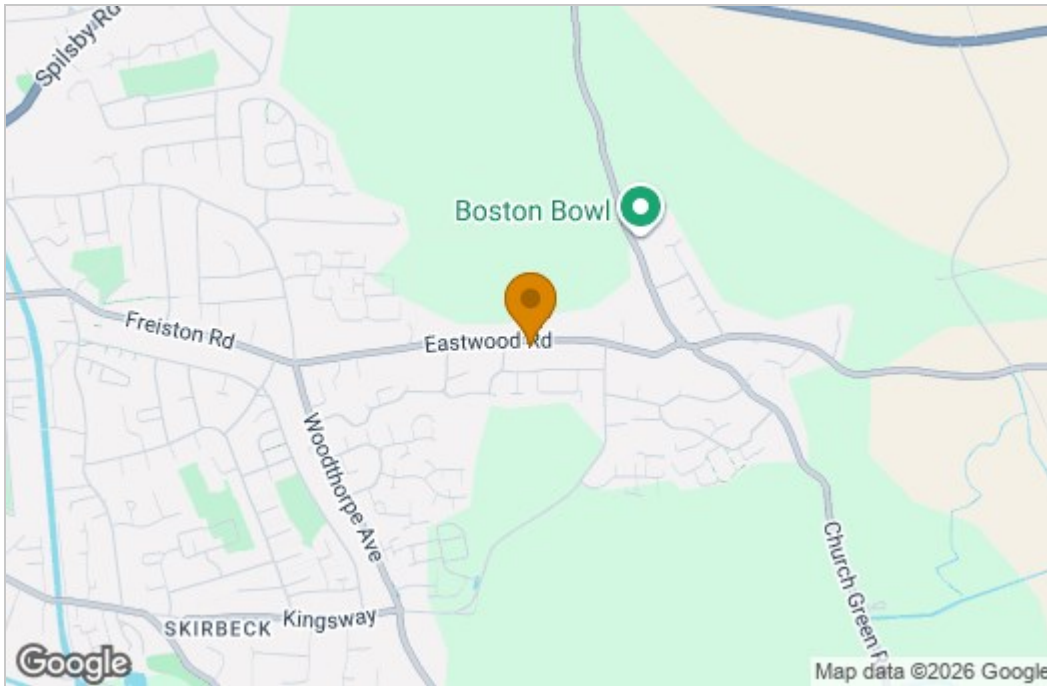


Total area: approx. 102.6 sq. metres (1104.0 sq. feet)

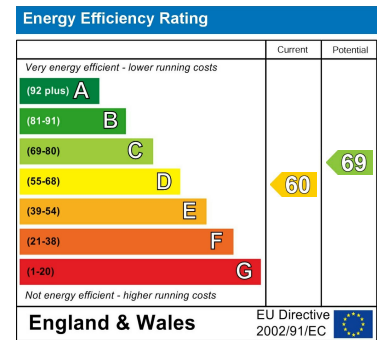
All images used are for illustrative purposes. Images are for guidance only and may not necessarily represent a true and accurate depiction of the condition of property. Floor plans are intended to give an indication of the layout only. All images, floor plans and dimensions are not intended to form part any contract. Plan produced using PlanUp.



Area Map



Energy Efficiency Graph



These particulars, whilst believed to be accurate are set out as a general outline only for guidance and do not constitute any part of an offer or contract. Intending purchasers should not rely on them as statements of representation of fact, but must satisfy themselves by inspection or otherwise as to their accuracy. No person in this firm's employment has the authority to make or give any representation or warranty in respect of the property.